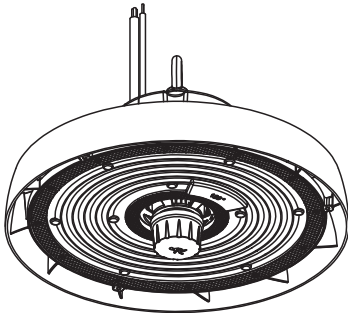
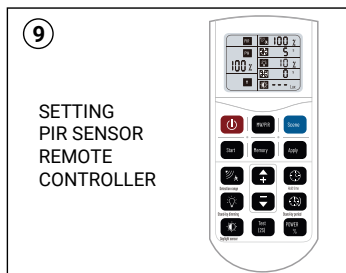
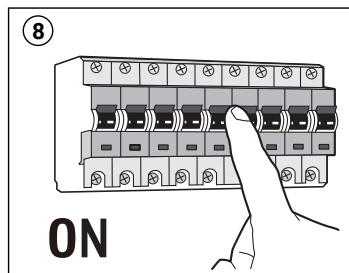
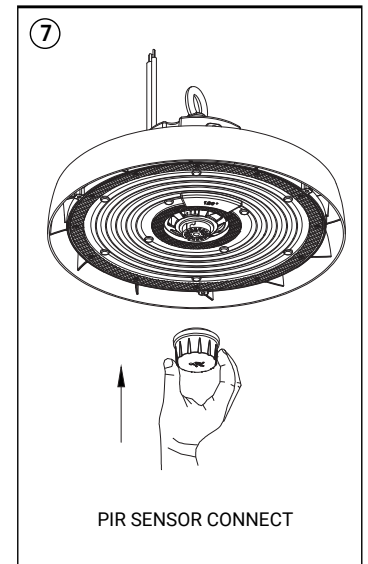
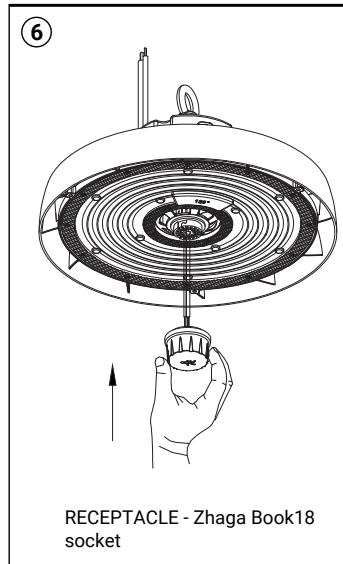
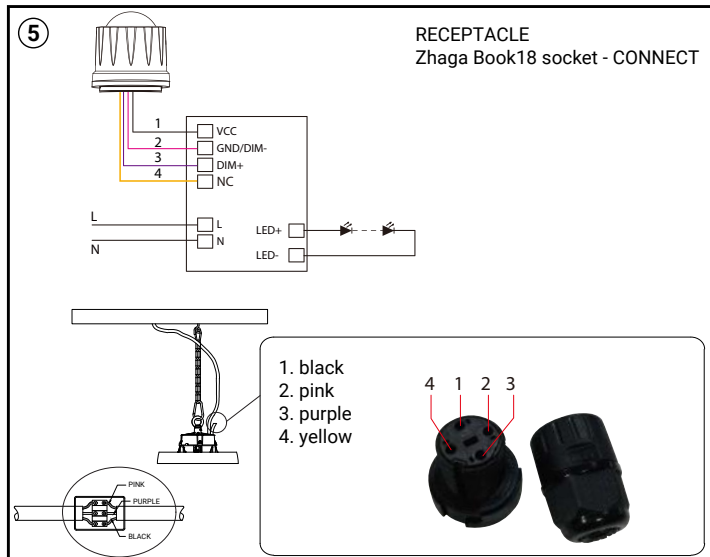
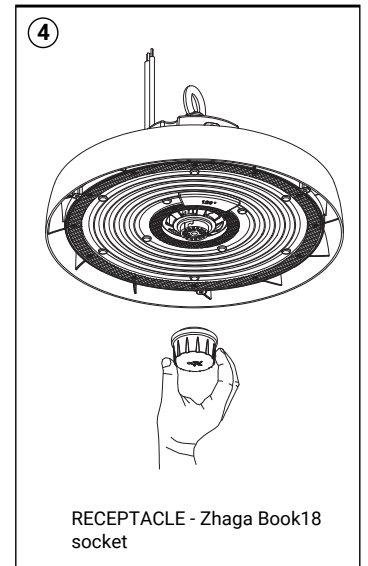
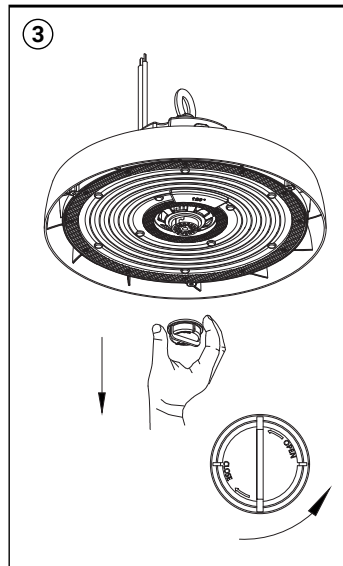
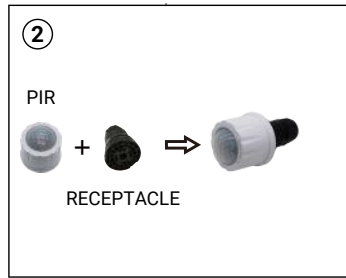
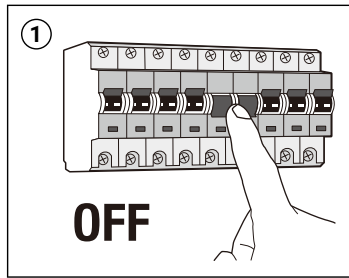


HBAY 31 PIR SENSOR



The installation may only be carried out by a technician
Nur ein Techniker kann die Installation durchführen
Instalaci smí provádět pouze technik
Inštaláciu môže vykonať iba technik



(EN) CAUTION!

Turn off the main power before proceeding with the installation in order to prevent possible shock. The installation may only be carried out by a technician or a qualified person. If the lamp has a lampshade/diffuser, handle it carefully as it is fragile. With an integrated LED light source, only a technician or a qualified person can make the replacement. The manufacturer is not responsible for the incorrect use and assembly of its products.

(DE) ACHTUNG!

Vor der Installation ist es notwendig, den Hauptstromkreis zu unterbrechen, um ein Stromschlag zu vermeiden. Die Installation darf nur von einem Techniker oder einer qualifizierten Person durchgeführt werden. Wenn die Lampe einen Lampenschirm/Diffuser hat, gehen Sie vorsichtig damit um, da sie zerbrechlich ist. Mit einer integrierten LED-Lichtquelle kann nur ein Techniker oder eine qualifizierte Person den Austausch vornehmen. Der Hersteller ist nicht verantwortlich für die fehlerhafte Verwendung und Montage seiner Produkte.

(SK) UPOZORNENIE!

Pred inštaláciou je nevyhnutné odpojiť hlavný elektrický okruh, aby ste predišli zasiahnutiu elektrickým prúdom. Montáž môže vykonať iba kvalifikovaná osoba. V prípade, že má svietidlo tienidlo/difúzor, narábajte s ním opatrne, pretože je krehké. Pri integrovanom LED svetelnom zdroji môže výmenu zrealizovať iba technik alebo kvalifikovaná osoba. Výrobca nenesie zodpovednosť za nesprávne zachádzanie s produktom.

(CZ) UPOZORNĚNÍ!

Před instalací je nutné odpojit hlavní elektrický okruh, abyste předešli zasažení elektrickým proudem. Montáž může provádět pouze kvalifikovaná osoba. V případě, že má svítidlo stínidlo/difúzor, zacházejte s ním opatrně, protože je křehké. Při integrovaném LED světelném zdroji může výměnu zrealizovat pouze technik nebo kvalifikovaná osoba. Výrobce nenesie odpovědnost za nesprávné zacházení s výrobkem.



PRODUCT SPECIFICATION

MODEL NO	HD06VCRH 7C
INPUT	12VDC
DESCRIPTION	12VDC HIGHBAY PIR SENSOR
CERTIFICATE	IN ACCORDANCE WITH CE ROHS

12VDC HIGHBAY PIR SENSOR WITH ZHAGA 18 RECEPTACLE

SHENZHEN HAISEN TECHNOLOGY CO.,LTD
13th Floor, C1 Building, Songshan Lake Intelligent Valley,
Liaobu Town, Dongguan City, 523808, Guangdong.
Contact us info@haisensz.com
www.haisensz.com

Series Work of Art
All Rights Reserved by HAISEN

WRITTEN BY	夏勇
CHECKED BY (R&D)	陈启东
CONFIRMED BY (SALES)	周慕
DATE	2022.11.18

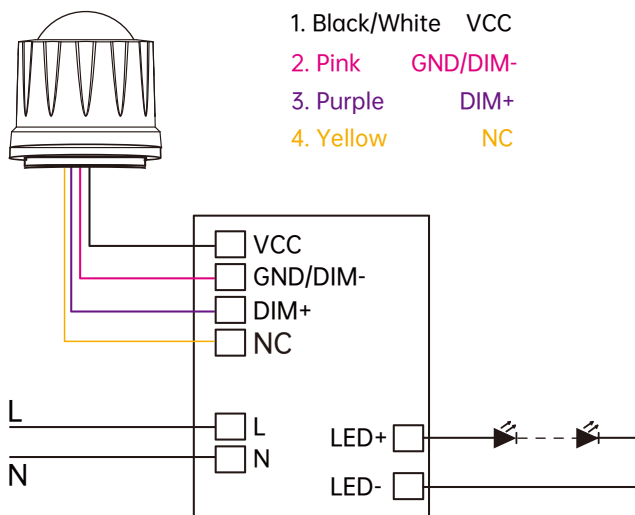
Features & Benefits

HD06VCRH 7C

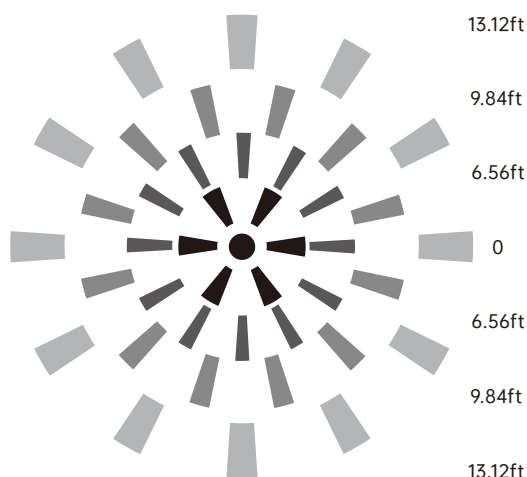
- PIR Sensor for max 12M Height.
- With Zhaga Book 18 Receptacle.
- Bi-level Dimmable, Daylight Priority.
- Remote Control.



Wiring Diagram

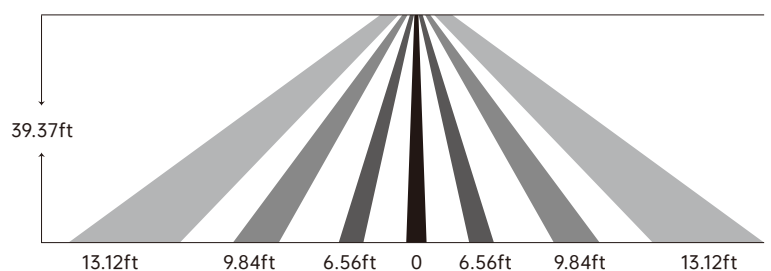


Detection Patterns



Mounting Height
 ≤12m Ceiling Mounted

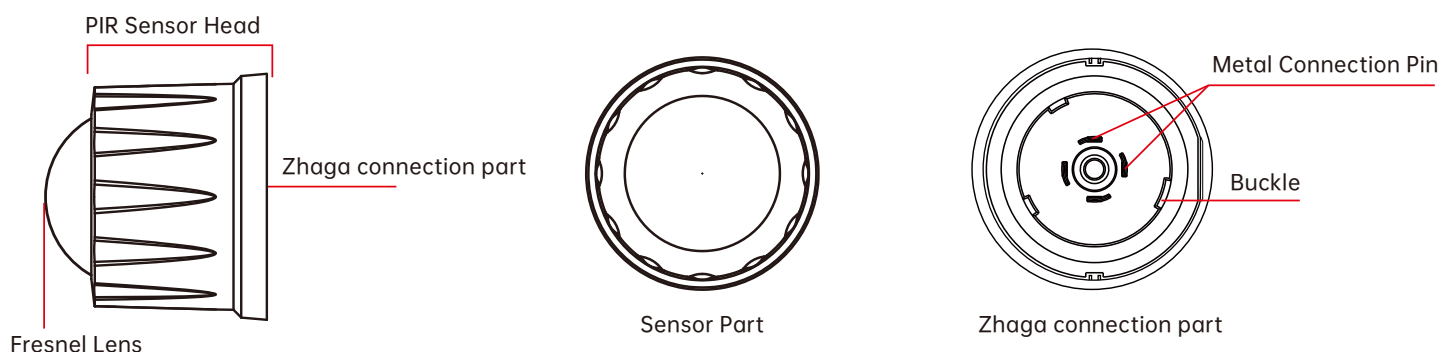
Detection Range
 Radius, 2-4m/6.58-13.12ft Ceiling Mounted



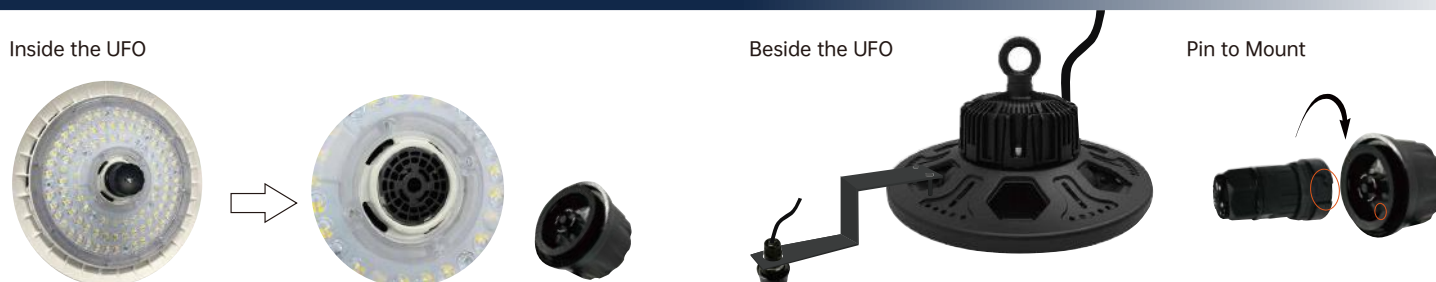
Parameters

Model NO.		HD06VCRH 7C
FUNCTION PARAMETER	Daylight Priority Function	Daylight priority function works when daylight threshold per set as 400Lux/350Lux/300Lux/250Lux/200Lux/120Lux/80Lux/50Lux/30Lux, standby period as /+∞ and standby dimming level as 10%/20%/30%
	Detection Area	25%/50%/75%/100%
	Daylight Threshold	Disable/400Lux/350Lux/300Lux/250Lux/200Lux/120Lux/80Lux/50Lux/30Lux/10Lux/2Lux
	Standby Dimming Level	10%/20%/30%/50%
	Standby Period	0s/10s/30s/1min/5min/10min/30min/60min/+∞
	Holdtime	5s/30s/1min/3min/5min/10min/20min/30min
	Dimming Play	Manually dim 10%~100% in ON/OFF mode, 60%~100% in sensor mode
SENSOR INFORMATION	Warm-up Period	40S
	Detection Angle	≤ 120° (Fresnel Lens)
	Control	Standard Partner HD05R, the LCD screen display remote (purchase separately)
	Installation Height	Max.12m/39.37ft Ceiling Mounted
	Detection Distance	Radius,2-4m/6.58-13.12ft Ceiling Mounted
	Warranty	3 Years
INPUT	Input Range	10.5-15V DC
	Connection	zhaga
OUTPUT	Signal	DIM 0-10V
	Stand-by Power	<15mA Power Consumption
ENVIRONMENT	Storage Temp	-20°C~+60°C
CERTIFICATE & STANDARDS	Environmental Requirements	In accordance with CE ROHS
	IP Rating	IP65

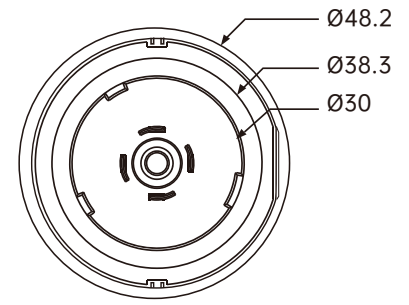
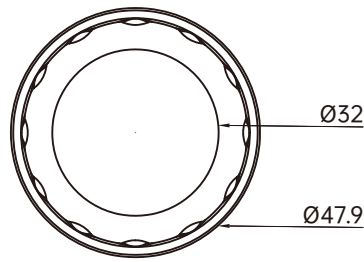
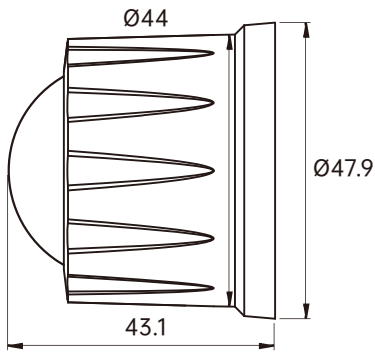
Mechanical structure



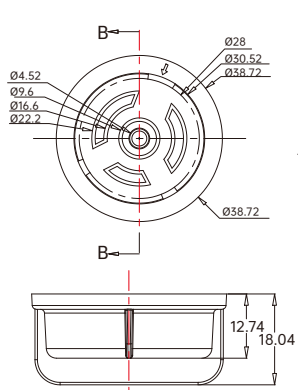
Installation



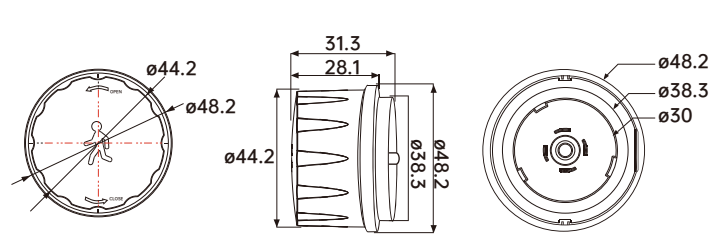
Dimensions Unit:mm



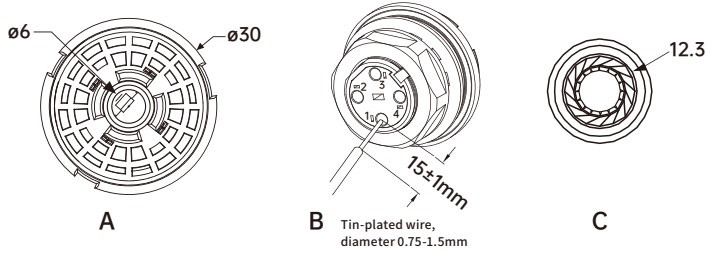
Cap



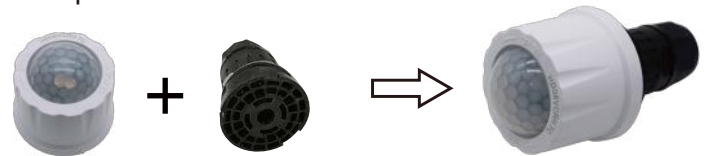
Module



Receptacle



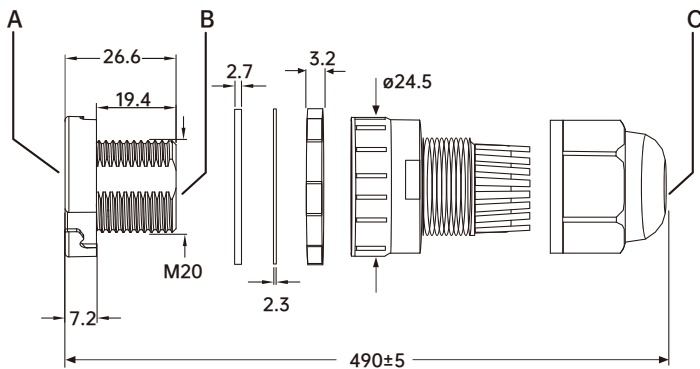
Components



Group 1. Receptacle with the functional module.



Group 2. Receptacle with the cap, no function.



Performance

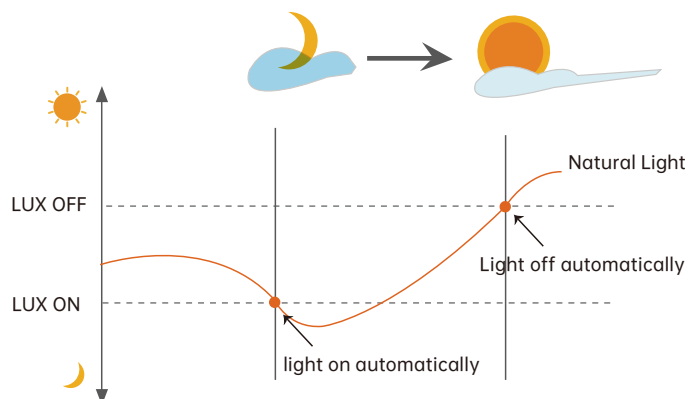
Dusk/Dawn sensor:

Dual-PD technology brings a fully automatic dusk/dawn sensor which can tell the difference between natural light and LED light, to ensure the light will be off when needed.

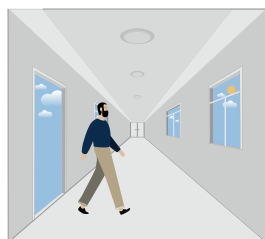
With Daylight priority function, HD06VCRH 7C is able to differentiate artificial light brightness from natural light after installed inside the fixture, and automatically turn off light when ambient brightness exceeds preset lux level.

Precondition of Daylight priority:

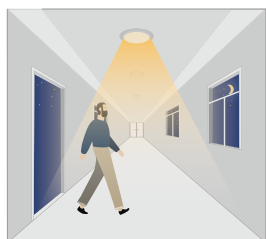
1. Standby period is $+\infty$;
2. Standby dimming level is on 10%, 20% or 30%;
3. Daylight threshold is on 400Lux/350Lux/300Lux/250Lux/200Lux/120Lux/80Lux/50Lux/30Lux.



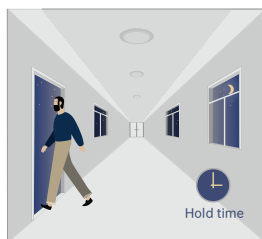
1. Automatically ON/OFF function



With sufficient daylight, even when motion detected, light remains OFF.



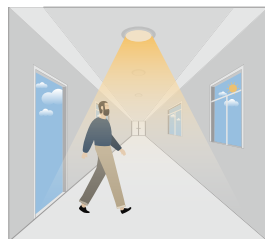
With insufficient daylight, the sensor turns light ON when motion gets detected.



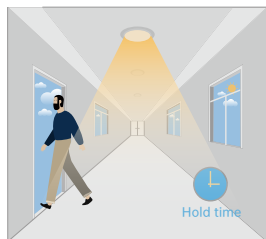
The sensor turns OFF light automatically after the holdtime when there's no motion detected.

2. Daylight Disable

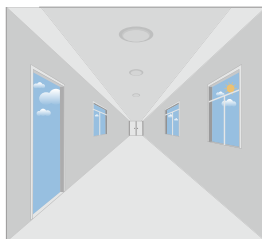
When daylight threshold is preset as "disable", the sensor turns light ON when motion gets detected, and OFF after holdtime.



The sensor turns light ON when motion gets detected.

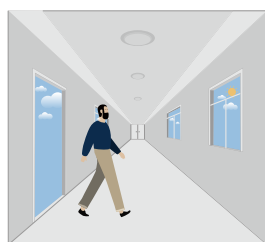


The sensor keeps light ON for holdtime period after motion leaves.

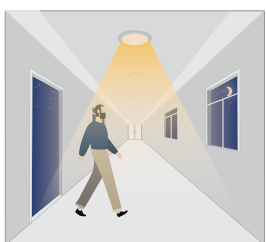


The sensor turns OFF light automatically after the holdtime.

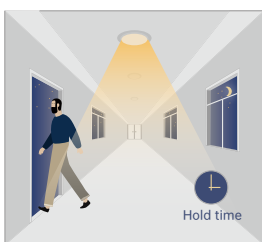
3. Corridor Function, Bi-level Dimmable



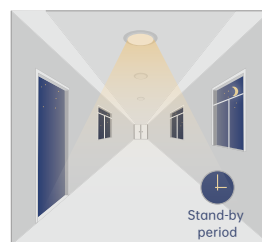
With sufficient daylight, the sensor keeps light OFF even motion gets detected.



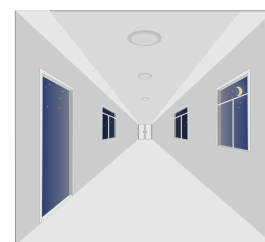
With insufficient daylight, the sensor turns light ON when motion gets detected.



After there's no motion detected, the sensor keeps light ON 100% for holdtime.



After holdtime, sensor dims light to standby dimming level for standby period.



The sensor turns OFF light automatically after the standby period when there's no motion detected.



Attention

1. The sensor should be installed by qualified electrician and ensure power is OFF before installation.
2. Please read the instruction carefully before using the product and keep it well for other users to read any time.
3. We reserve the right to modify any incorrect text, image and technical parameters.
4. Any unauthorized modification is forbidden. Otherwise all guarantees will be immediately invalid.
5. Product could be optimized without prior notice.

Application Notes
















1. Suitable for indoor application, half/completely outdoor environment conditions might trigger the sensor.
2. Suitable for ceiling mount installation, adjust sensitivity properly if it's installed on side-wall because it gets more sensitive.
3. PIR sensor can't be placed inside any material, fresnel lens must completely exposed in air.
4. Fresnel lens of the PIR sensor must be lower than light fixture.
5. Not suitable environment if there's sudden changed temperature of airflow for PIR sensor.
6. Not suitable environment if there's shelves blocking between the sensor and presence area.
7. Detection area options may NOT working obviously because it works depends on fresnel lens, it's physically defined.
8. Detection distance performance works better when moving parallelly than moving towards to the sensor.
9. Daylight testing delivered in bright day without shadow or specially designed lampshade or lens.
10. Dimming performance differs when connected to different drivers; If the driver can't completely turn OFF, sensor can't either.
11. Input power voltage must be stable with float less than 10%.
12. The first time powered ON sensor, light will be ON 100% for about 45S then dims to standby level or OFF.
13. Distance detection is delivered by testing person about 165cm in open area as reference, the result differs by size and speed of moving objects, mounting height and real-life situation.

SCREEN DISPLAY, MEMORY & APPLY FUNCTION, OPTIONAL SCENES

Model: HD05R



Briefing of Button Functions

Buttons	Function	Performance
	ON/OFF	Turn ON or OFF the sensor.
	MW/PIR	Exchange from Microwave detection to PIR detection, for future use.
	Reset	Press it to start detection programming; before pressing any other buttons, the screen shows default programming (Detection Area 100%, Holdtime 5S, Daylight Disable, Standby Dimming 10%, Standby Period 0S)
	Start	Press it before you try to memorize program into the remote; After pressing it, S on the screen will blink and keeping blinking while making the program.
	Memory	Press it after programming, the blinking S will become a solid M, that means the program has been well memorized.
	Apply	Press it to deliver the preset program to the specific sensors; every press will make the whole screen blink gently.
	Detection area	Also known as "sensitivity", 100% means the highest sensitivity and longest distance. Press it, specific icon on the screen will blink and press the + - buttons to adjust.
	Hold time	The period that light will stay illuminated 100% after no motion's detected; Press it, specific icon on the screen will blink and press the +- buttons to adjust.
	Daylight Threshold	The preset lux level to compare with ambient brightness when motion gets detected; Press it, specific icon on the screen will blink and press the + - buttons to adjust.
	Stand-by period	The period after holdtime, during which the light keeps standby dimming level; Press it, specific icon on the screen will blink and press the + - buttons to adjust.
	Stand-by dimming level	After holdtime, the light will dim from 100% to optional standby dimming levels; Press it, specific icon on the screen will blink and press the + - buttons to adjust.
	UP	The main functional buttons to adjust the factors to wanted level.
	DOWN	
	POWER	Supports to manually change dimming output in detection mode; Press it, specific icon on the screen will blink and press the + - buttons to adjust.
	Test mode	Supports to check if the sensor works correctly with a short 2S holdtime; Press it and the holdtime will change to 2S, and it can't be memorized.

HOW TO USE HD05R

1. SENSOR PROGRAMMING

1. ON/OFF button to turn on the light
2. SCENE button to start programming
3. Choose functional button of detection area, see icon blinking on the LCD screen display then use + - buttons to change
4. Same programming with all the other functional buttons of holdtime ,standby dimming level, standby period and daylight threshold
5. Done and leave the remote.

*Icon keeps blinking on the screen for 5S that means the program will then be kept after 5S.

*Each press will make sensor dim down light then back to 100%, it means remote signal has been well received.

2. MEMORY AND APPLY

@the 1st sensor

1. ON/OFF button to turn on the light
2. SCENE button to start programming
3. START button
4. Choose functional button of detection area, see icon blinking on the LCD screen display then use + - buttons to change
5. Same programming with all the other functional buttons of holdtime ,standby dimming level, standby period and daylight threshold
6. MEMORY button

7. APPLY button

@the other sensors

1. ON/OFF button to turn on the light
2. SCENE button to start programming
3. APPLY button

3. MANULLY DIMMING

ON/OFF mode

1. ON/OFF button to turn on the light
2. Press +- button to dim light directly, it dims from 10% to 100%

DIMMING mode

1. ON/OFF button to turn on the light
2. SCENE button to start programming
3. POWER button
4. +- buttons to dim light, but it only dims from 60% to 100%; 50% is one of the standby dimming level options

* Number on LCD screen display may keep changing 10%-100%.